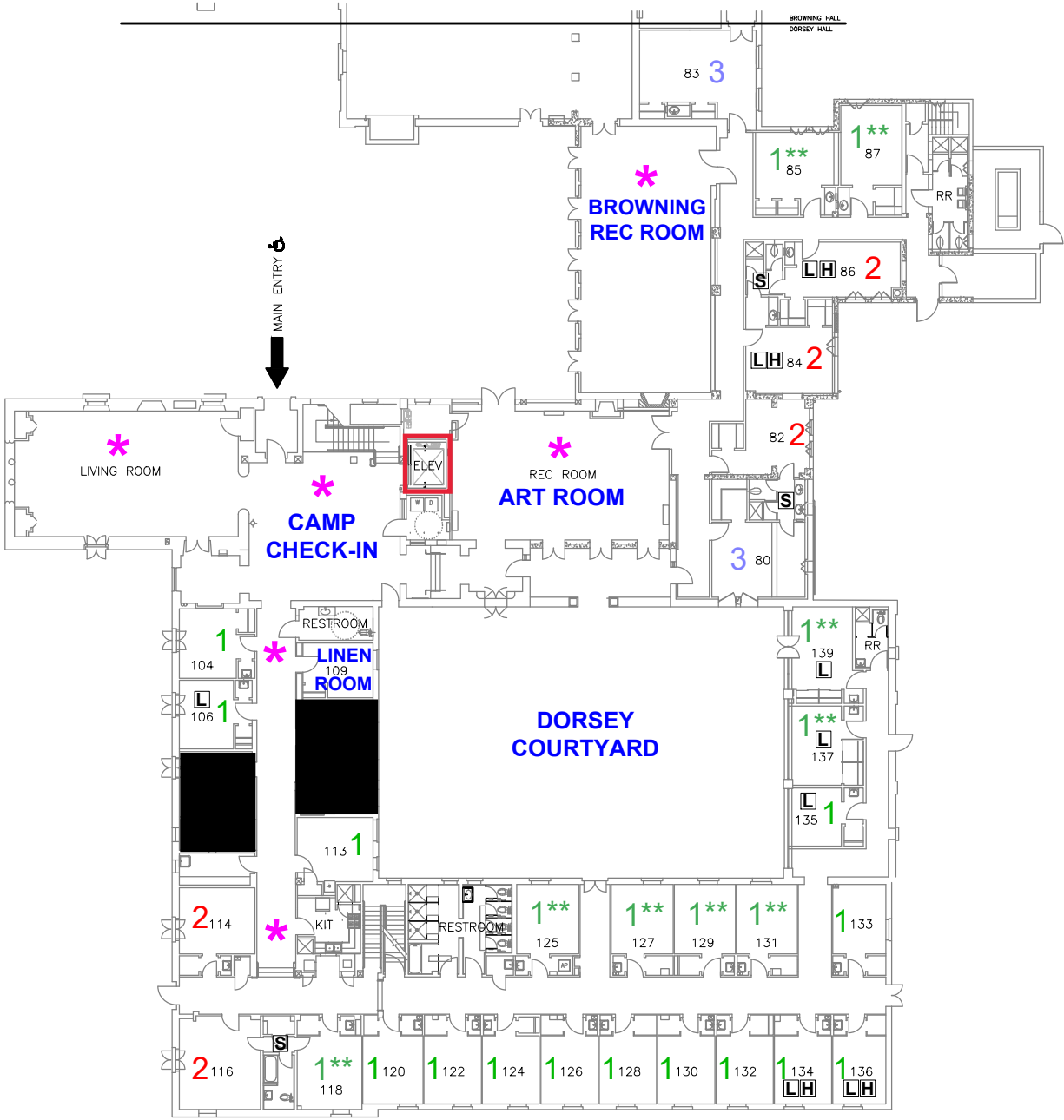


# DORSEY HALL FIRST FLOOR

CAMP  
SCRIPPS  
TEA



### CAMP LEGEND:

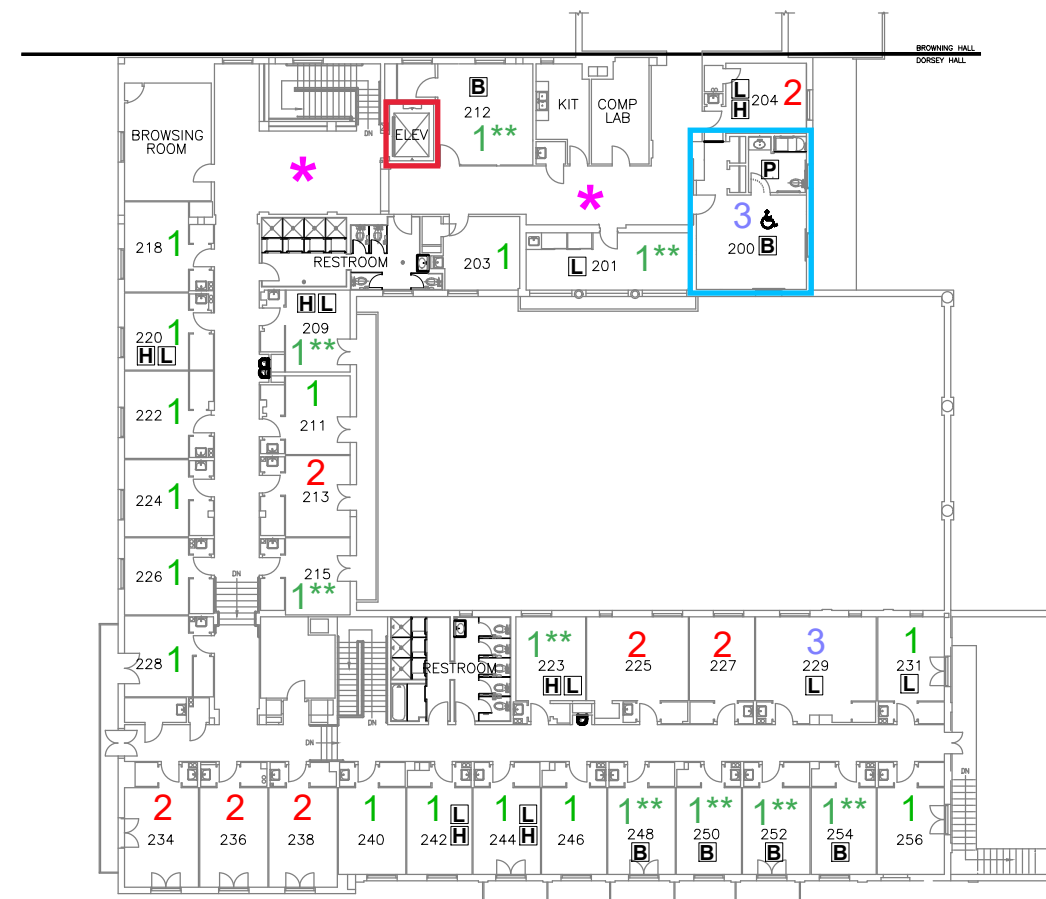
- \* High-Traffic/Noisy Areas
  - Elevator
  - 1 = Single Occupancy
  - 2 or 3 = Double Occupancy
  - 1\*\* = Double Room selling as Single Occ.
- Please note: Room availability is subject to change.*

### LEGEND:

- B** DORMITORY WITH BUNKED BEDS
- S** DORMITORY WITH SHARED RESTROOM
- P** DORMITORY WITH PRIVATE RESTROOM
- L** LVT/NON-CARPETED DORMITORY
- H** HEARING ASSISTED DORMITORY
- ♿** ACCESSIBLE DORMITORY



# DORSEY HALL SECOND FLOOR



**CAMP LEGEND:**

- \* High-Traffic/Noisy Areas
- Elevator
- 1 = Single Occupancy
- 2 or 3 = Double Occupancy
- 1\*\* = Double Room selling as Single Occ.

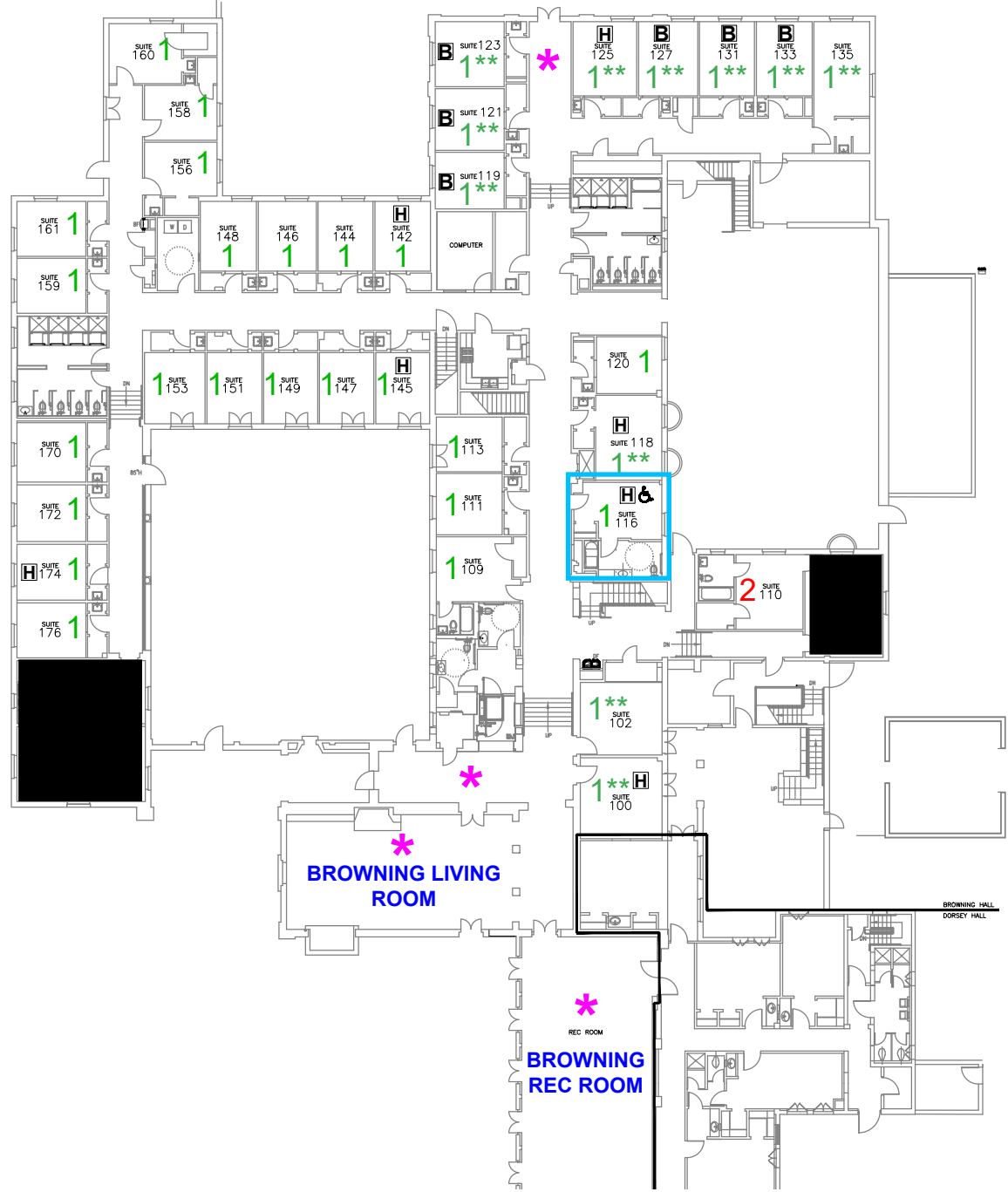
*Please note: Room availability is subject to change.*

**LEGEND:**

- B** DORMITORY WITH BUNKED BEDS
- S** DORMITORY WITH SHARED RESTROOM
- P** DORMITORY WITH PRIVATE RESTROOM
- L** LVT/NON-CARPETED DORMITORY
- H** HEARING ASSISTED DORMITORY
- ♿** ACCESSIBLE DORMITORY



# BROWNING HALL FIRST FLOOR



### CAMP LEGEND:

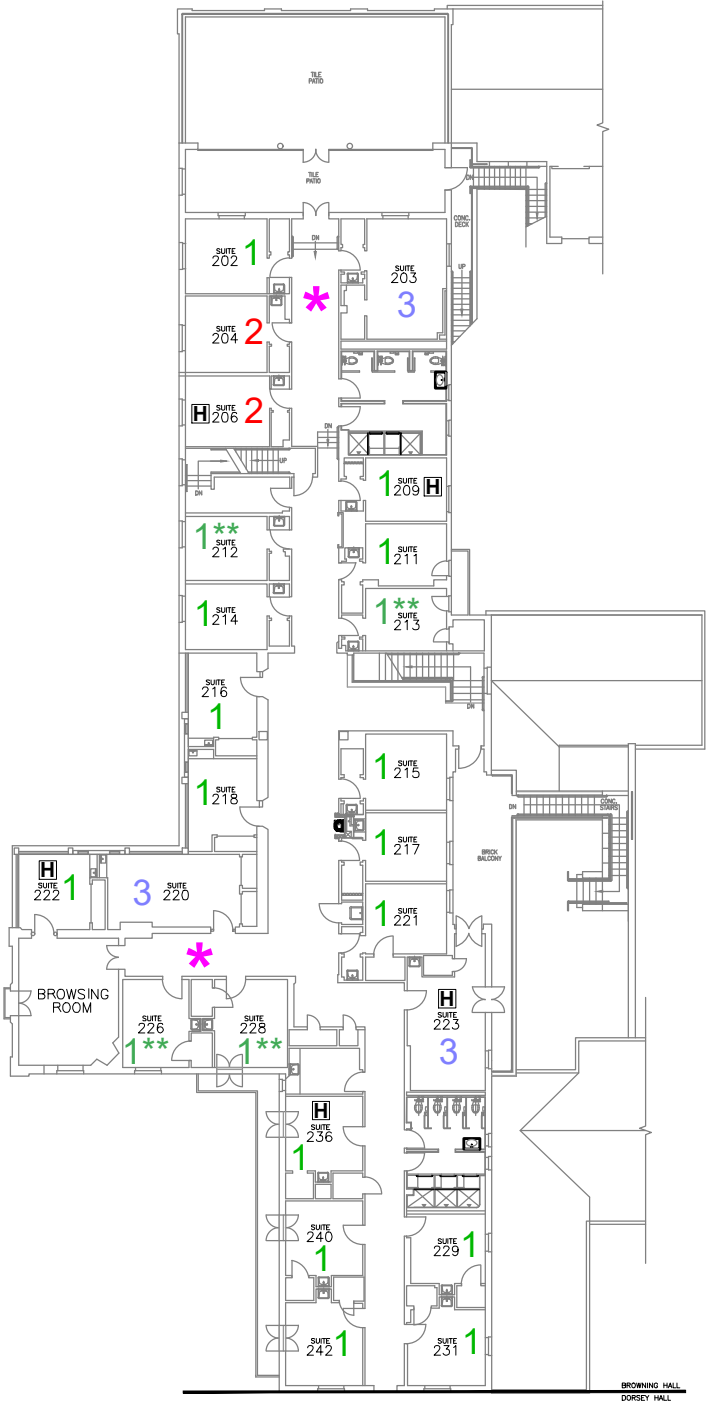
- \* High-Traffic/Noisy Areas
  - Elevator
  - 1 = Single Occupancy
  - 2 or 3 = Double Occupancy
  - 1\*\* = Double Room selling as Single Occ.
- Please note: Room availability is subject to change.*

### LEGEND:

- B** DORMITORY WITH BUNKED BEDS
- S** DORMITORY WITH SHARED RESTROOM
- P** DORMITORY WITH PRIVATE RESTROOM
- L** LVT/NON-CARPETED DORMITORY
- H** HEARING ASSISTED DORMITORY
- ♿** ACCESSIBLE DORMITORY



# BROWNING HALL SECOND FLOOR



### CAMP LEGEND:

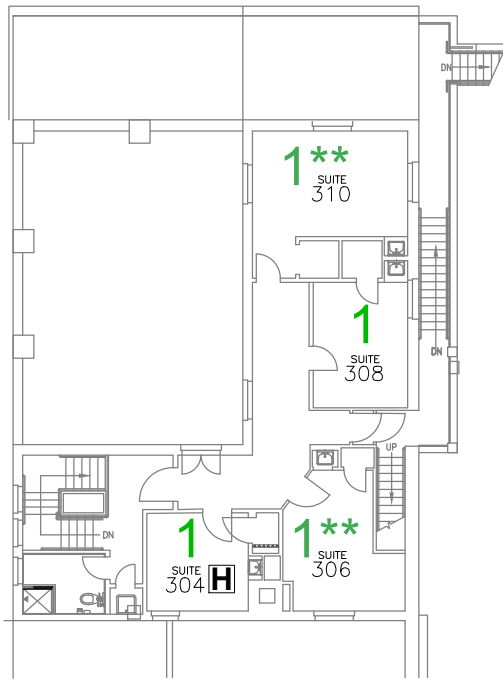
- \* High-Traffic/Noisy Areas
  - Elevator
  - 1 = Single Occupancy
  - 2 or 3 = Double Occupancy
  - 1\*\* = Double Room selling as Single Occ.
- Please note: Room availability is subject to change.*

### LEGEND:

- B** DORMITORY WITH BUNKED BEDS
- S** DORMITORY WITH SHARED RESTROOM
- P** DORMITORY WITH PRIVATE RESTROOM
- L** LVT/NON-CARPETED DORMITORY
- H** HEARING ASSISTED DORMITORY
- ♿** ACCESSIBLE DORMITORY



**BROWNING HALL  
THIRD FLOOR**



**CAMP LEGEND:**

- \* High-Traffic/Noisy Areas
  - Elevator
  - 1 = Single Occupancy
  - 2 or 3 = Double Occupancy
  - 1\*\* = Double Room selling as Single Occ.
- Please note: Room availability is subject to change.*

**LEGEND:**

- B** DORMITORY WITH BUNKED BEDS
- S** DORMITORY WITH SHARED RESTROOM
- P** DORMITORY WITH PRIVATE RESTROOM
- L** LVT/NON-CARPETED DORMITORY
- H** HEARING ASSISTED DORMITORY
- ♿** ACCESSIBLE DORMITORY

